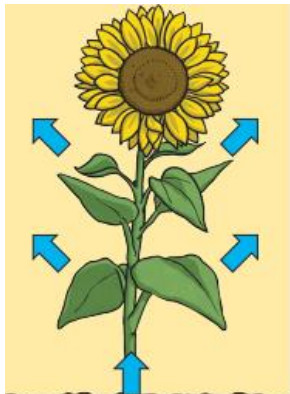


Plants

How water moves through a plant

1. The **roots** absorb water from the soil.
2. The **stem** transports water to the **leaves**.
3. Water **evaporates** from the **leaves**.
4. This **evaporation** causes more water to be sucked up the **stem**.

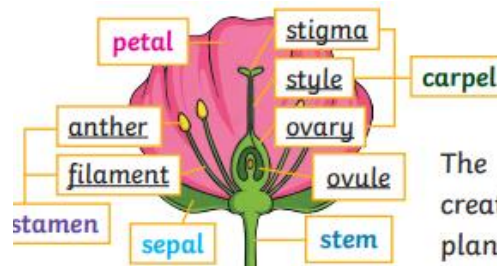
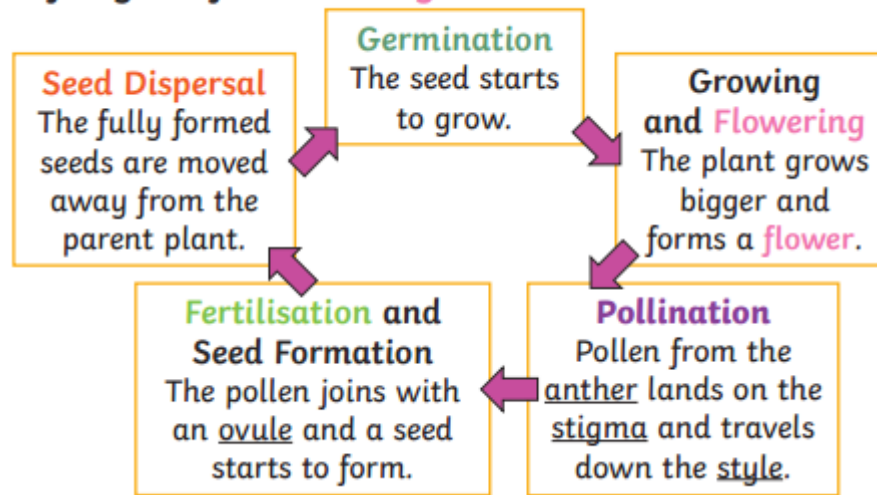


The water is sucked up the stem like water being sucked up a straw

Key knowledge

What does a plant need to grow?	Water, light, food and nutrients, air, room to grow
How does a seed disperse?	Water, dropping, carrying, eating, shaking, bursting

Life Cycle of a Flowering Plant



The **flower's** job is to create seeds so that new plants can be grown.

Key Vocabulary

roots	These anchor the plant into the ground and absorb water and nutrients from the soil
stem	This holds the plant up and carries water and nutrients from the soil to the leaves.
leaves	These make food for the plant using sunlight and carbon dioxide from air.
nutrients	These substances are needed by a living thing to grow and survive.
evaporation	When a liquid turns into gas
fertilisation	When the male and female parts of the flower have mixed to make seeds for new plants
Stamen, anther and filament	The male parts of the flower. The filament holds up the anther which makes pollen
Carpel, stigma, style and ovary	The female parts of the flower. The style holds up the stigma which collects the pollen when a pollinator brushes past it.
germination	When a seed starts to grow
pollinator	Animals which carry pollen between plants
Seed dispersal	A method of moving the seeds away from the parent plant so it survives